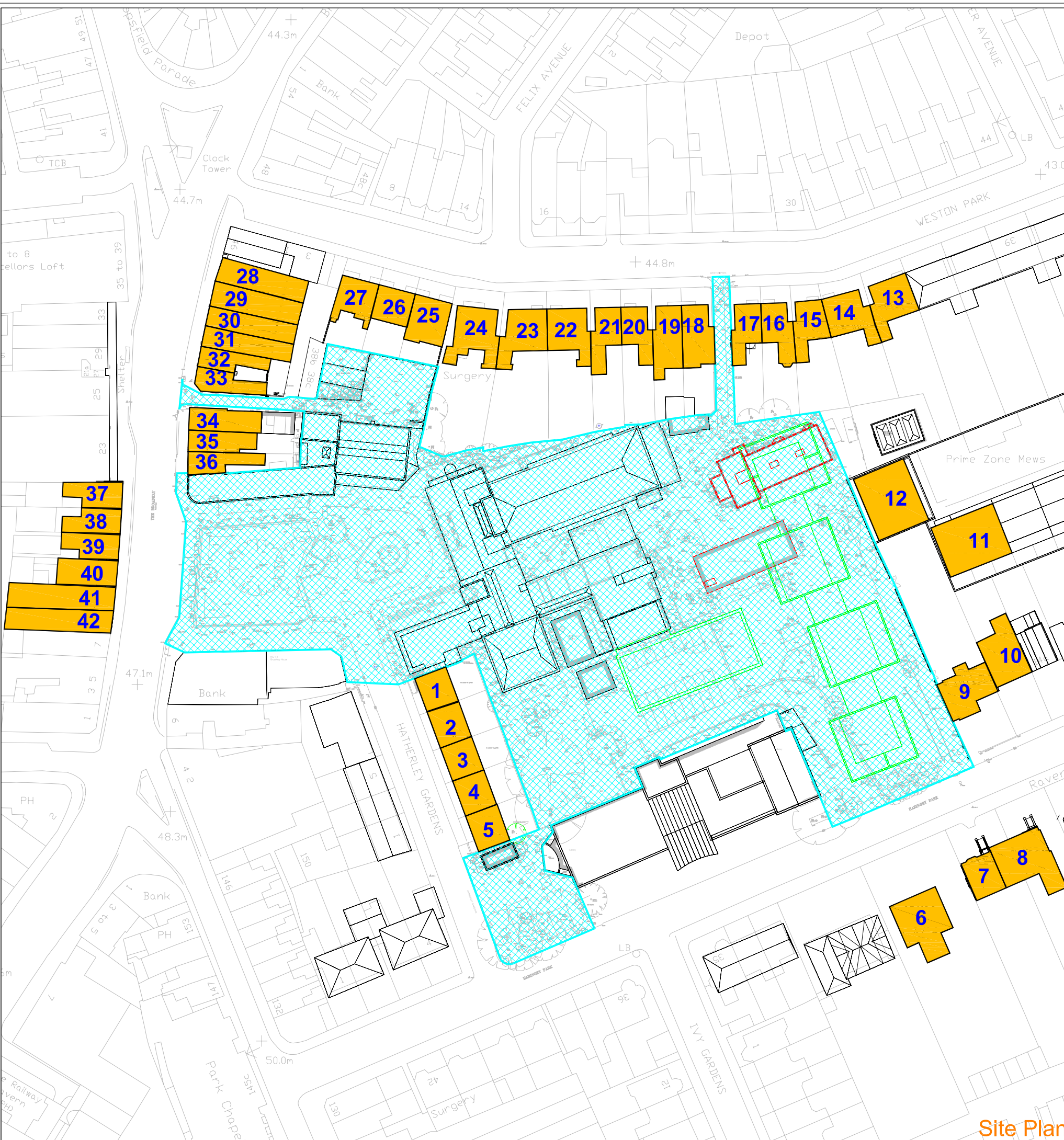


**APPENDIX A**

**LOCATION DRAWINGS**

**09219/SPT/803  
09219/LOC/901, 801 - 815**



- 1: 10 Hatherley Gardens**  
See Dwg No's:LOC/801
- 2: 8 Hatherley Gardens**  
See Dwg No's:LOC/801
- 3: 6 Hatherley Gardens**  
See Dwg No's:LOC/801
- 4: 4 Hatherley Gardens**  
See Dwg No's:LOC/801
- 5: 2 Hatherley Gardens**  
See Dwg No's:LOC/801
- 6: 31 Haringey Park**  
See Dwg No's:LOC/802
- 7: 30 Haringey Park**  
See Dwg No's:LOC/802
- 8: 29 Haringey Park**  
See Dwg No's:LOC/802
- 9: 13 Haringey Park**  
See Dwg No's:LOC/803
- 10: 14 Haringey Park**  
See Dwg No's:LOC/803
- 11: Prime Zone Mews**  
See Dwg No's:LOC/804
- 12: Prime Zone Mews**  
See Dwg No's:LOC/804
- 13: 33 Weston Park**  
See Dwg No's:LOC/805
- 14: 31 Weston Park**  
See Dwg No's:LOC/805
- 15: 29 Weston Park**  
See Dwg No's:LOC/806
- 16: 27 Weston Park**  
See Dwg No's:LOC/806
- 17: 25 Weston Park**  
See Dwg No's:LOC/806
- 18: 23 Weston Park**  
See Dwg No's:LOC/807
- 19: 21 Weston Park**  
See Dwg No's:LOC/807
- 20: 19 Weston Park**  
See Dwg No's:LOC/808
- 21: 17 Weston Park**  
See Dwg No's:LOC/808
- 22: 15 Weston Park**  
See Dwg No's:LOC/808
- 23: 13 Weston Park**  
See Dwg No's:LOC/808
- 24: 11 Weston Park**  
See Dwg No's:LOC/808
- 25: 9 Weston Park**  
See Dwg No's:LOC/809
- 26: 7 Weston Park**  
See Dwg No's:LOC/809
- 27: 5 Weston Park**  
See Dwg No's:LOC/809

- 28: 44 The Broadway**  
See Dwg No's:LOC/810
- 29: 42 The Broadway**  
See Dwg No's:LOC/810
- 30: 40 The Broadway**  
See Dwg No's:LOC/810
- 31: 38 The Broadway**  
See Dwg No's:LOC/810
- 32: 36 The Broadway**  
See Dwg No's:LOC/810
- 33: 34 The Broadway**  
See Dwg No's:LOC/810
- 34: 32 The Broadway**  
See Dwg No's:LOC/811
- 35: 30 The Broadway**  
See Dwg No's:LOC/811
- 36: 28 The Broadway**  
See Dwg No's:LOC/811
- 37: 19 The Broadway**  
See Dwg No's:LOC/812
- 38: 17 The Broadway**  
See Dwg No's:LOC/812
- 39: 15 The Broadway**  
See Dwg No's:LOC/812
- 40: 13 The Broadway**  
See Dwg No's:LOC/812
- 41: 11 The Broadway**  
See Dwg No's:LOC/812
- 42: 9 The Broadway**  
See Dwg No's:LOC/812

NO DIMENSIONS TO BE SCALED FROM THIS DRAWING:

Site Boundary  
Buildings Highlighted

**SOURCE DATA**

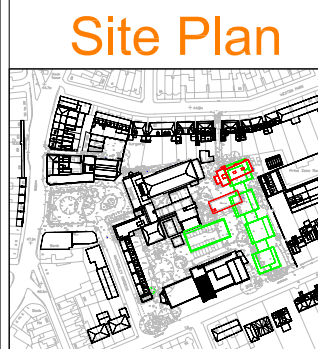
Drawings Used:  
Existing and surrounding buildings:  
CADPLAN Surveyors:  
Dwg No's: 4606\_01 Through to 48.

On Centre Surveys:  
Dwg No's: 18891 A/1 Through to 5.

Ordnance Survey Plan Data.

**NOTES**

All neighbouring properties considered for analysis.



| REV | Description | Drawn | Chk'd | Date |
|-----|-------------|-------|-------|------|
|     |             |       |       |      |

**Delva Patman Associates**  
 2 Henrietta Street London WC2E 8PS  
 Tel: 020 7240 6004 Fax: 020 7240 7658  
 E-mail: info@delvapatman.co.uk  
 Chartered Surveyors Design Consultants

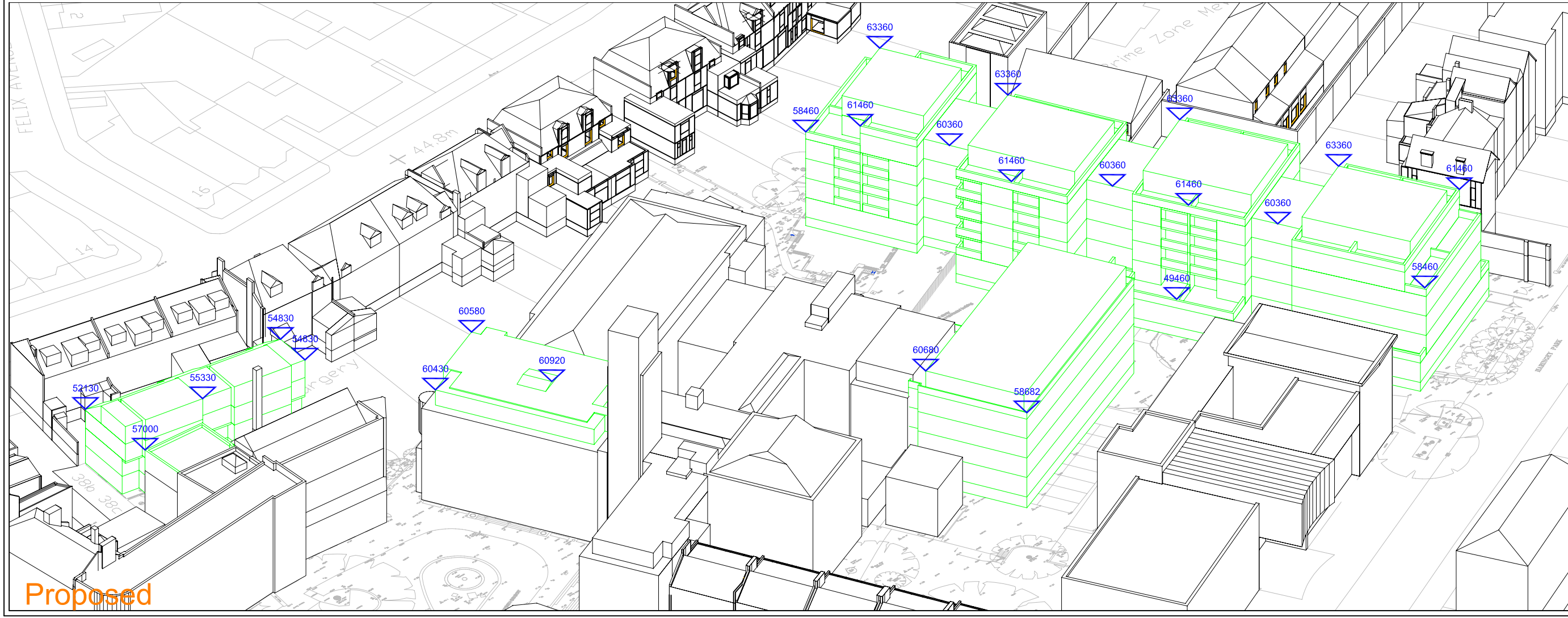
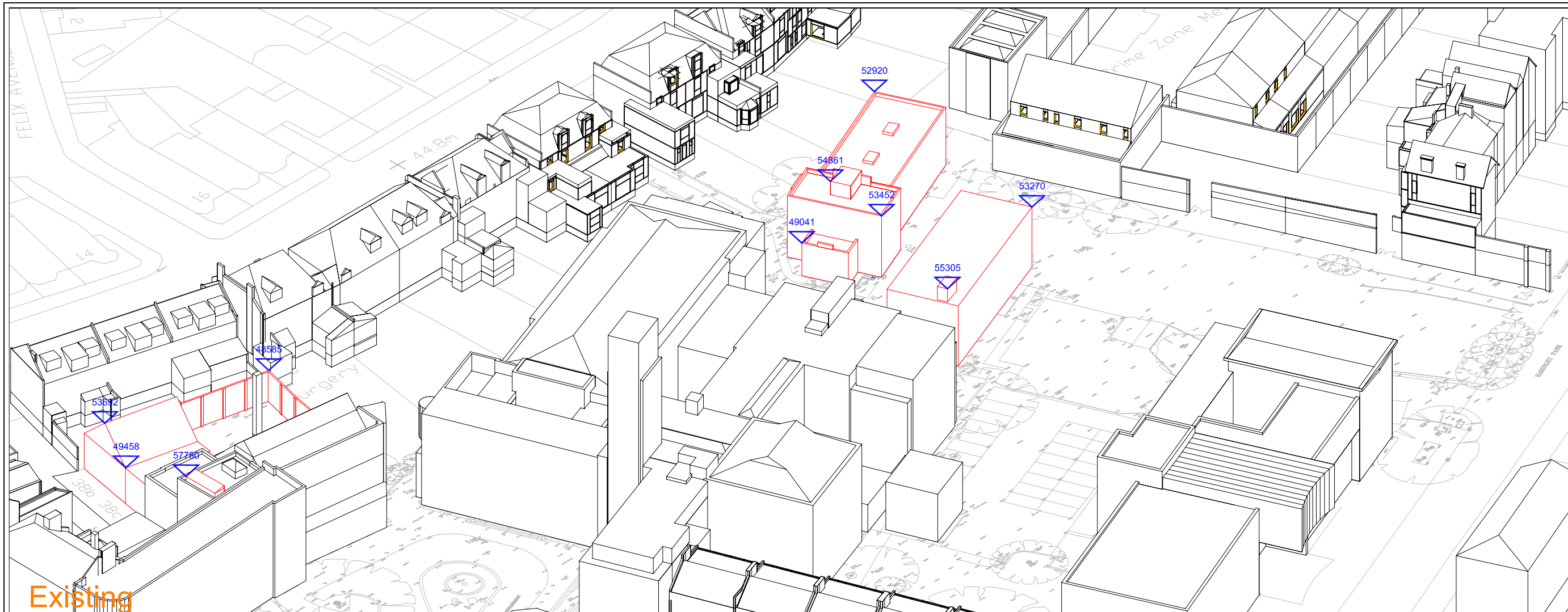
**TITLE:** HORNSEY TOWN HALL LONDON  
 -  
 DAYLIGHT / SUNLIGHT ANALYSIS

**DRAWING:** Hornsey Town Hall - Property Location Plan  
 Daylight / Sunlight Analysis  
 Existing & Proposed Schemes  
 -  
 -  
 -

|                        |              |
|------------------------|--------------|
| DRAWN: DW              | JOB NO:      |
| SCALE: 1:1000@A3       | <b>09219</b> |
| DATE: 12/2/2010        |              |
| DWG NO: <b>LOC/901</b> | REV: -       |

Site Plan





NO DIMENSIONS TO BE SCALED FROM THIS DRAWING:

█ Existing     Surrounding  
█ Proposed  
 Buildings Highlighted

**SOURCE DATA**

Drawings Used:  
 Existing and surrounding buildings:  
 CADPLAN Surveyors:  
 Dwg No's: 4606\_01 Through to 48.

On Centre Surveys:  
 Dwg No's: 18891 A/1 Through to 5.

Ordnance Survey Plan Data.

Proposed Scheme:  
 John McAslam & Partners Architects:  
 Dwg No's: Building A, B & East Wing:  
 1298-G100-P-SITE-KEY-REV\_03,  
 1298-FD-G200-P-LG-550-REV\_4,  
 P-00-551-REV\_4, P-01-552-REV\_4,  
 P-02-553-REV\_4, P-03-554-REV\_4,  
 P-04-555-REV\_4,  
 1298-ZO-G100-S-CC-016-REV\_4,  
 S-GG-020-REV\_3, S-LL-025-REV\_6,  
 S-MM-026-REV\_4, S-NN-027-REV\_4,  
 S-PP-029-REV\_3, S-QQ-016-REV\_4.

Broadway Annex:  
 1298-BA-G200-E-S-310-REV\_02,  
 P-00-300-REV\_4, P-01-301-REV\_4,  
 P-02-302-REV\_4, P-04-304-REV\_4.

Mews Buildings:  
 1298-MD-G200-E-N-760-REV\_1,  
 P-00-700-REV\_1, P-01-701-REV\_1,  
 P-02-702-REV\_1, P-RF-703-REV\_1,  
 S-AA-770-REV\_1.

Link Building:  
 1298-ZO-G100-S-FFGG-030-REV\_02,  
 S-QQ-031-REV\_00.

**NOTES**

All heights are measured in mm AOD.

## Site Plan



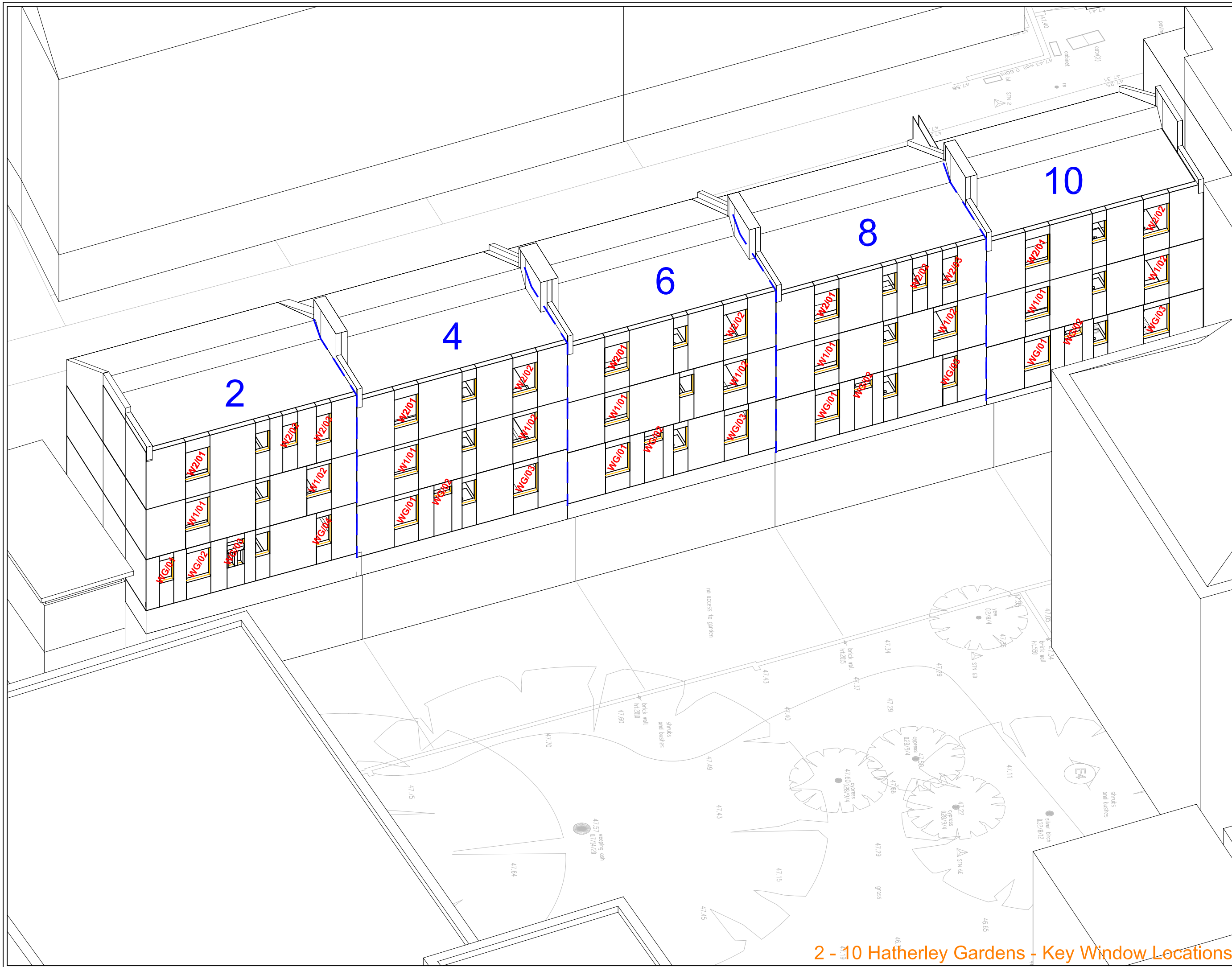
| REV | Description | Drawn | Chk'd | Date |
|-----|-------------|-------|-------|------|
|     |             |       |       |      |

  
**Delva Patman Associates**  
 2 Henrietta Street London WC2E 8PS  
 Tel: 020 7240 6004 Fax: 020 7240 7658  
 E-mail: info@delvapatman.co.uk  
 Chartered Surveyors & Design Consultants

**TITLE:**  
 HORNSEY TOWN HALL  
 LONDON WC2E  
 -  
 DAYLIGHT / SUNLIGHT ANALYSIS

**DRAWING:**  
 Hornsey Town Hall  
 Daylight / Sunlight Analysis  
 Key Building Heights  
 Existing & Proposed Schemes  
 -  
 Planning Scheme

|                        |              |
|------------------------|--------------|
| DRAWN: DW              | JOB NO:      |
| SCALE: 1:100@A3        | <b>09219</b> |
| DATE: 23/2/2010        |              |
| DWG NO: <b>SPT/803</b> | REV: -       |



NO DIMENSIONS TO BE SCALED FROM THIS DRAWING:

|  |   |
|--|---|
| <span style="color: red;">■</span> Existing      | <span style="color: red;">W1/08</span> Window Tested Daylight only        |
| <span style="color: green;">■</span> Proposed    | <span style="color: blue;">W1/08</span> Window Tested Daylight & Sunlight |
| <span style="color: black;">■</span> Surrounding |   |

**SOURCE DATA**

Drawings Used:  
 Existing and surrounding buildings:  
 CADPLAN Surveyors:  
 Dwg No's: 4606\_01 Through to 48.

On Centre Surveys:  
 Dwg No's: 18891 A/1 Through to 5.

Ordnance Survey Plan Data.

**NOTES**

Building not accessed to assess internal configuration - room uses assumed.

**Site Plan**

| REV | Description | Drawn | Chk'd | Date |
|-----|-------------|-------|-------|------|
|     |             |       |       |      |
|     |             |       |       |      |

**Delva Patman Associates**  
 2 Henrietta Street London WC2E 8PS  
 Tel: 020 7240 6004 Fax: 020 7240 7658  
 E-mail: info@delvapatman.co.uk  
 Chartered Surveyors & Design Consultants

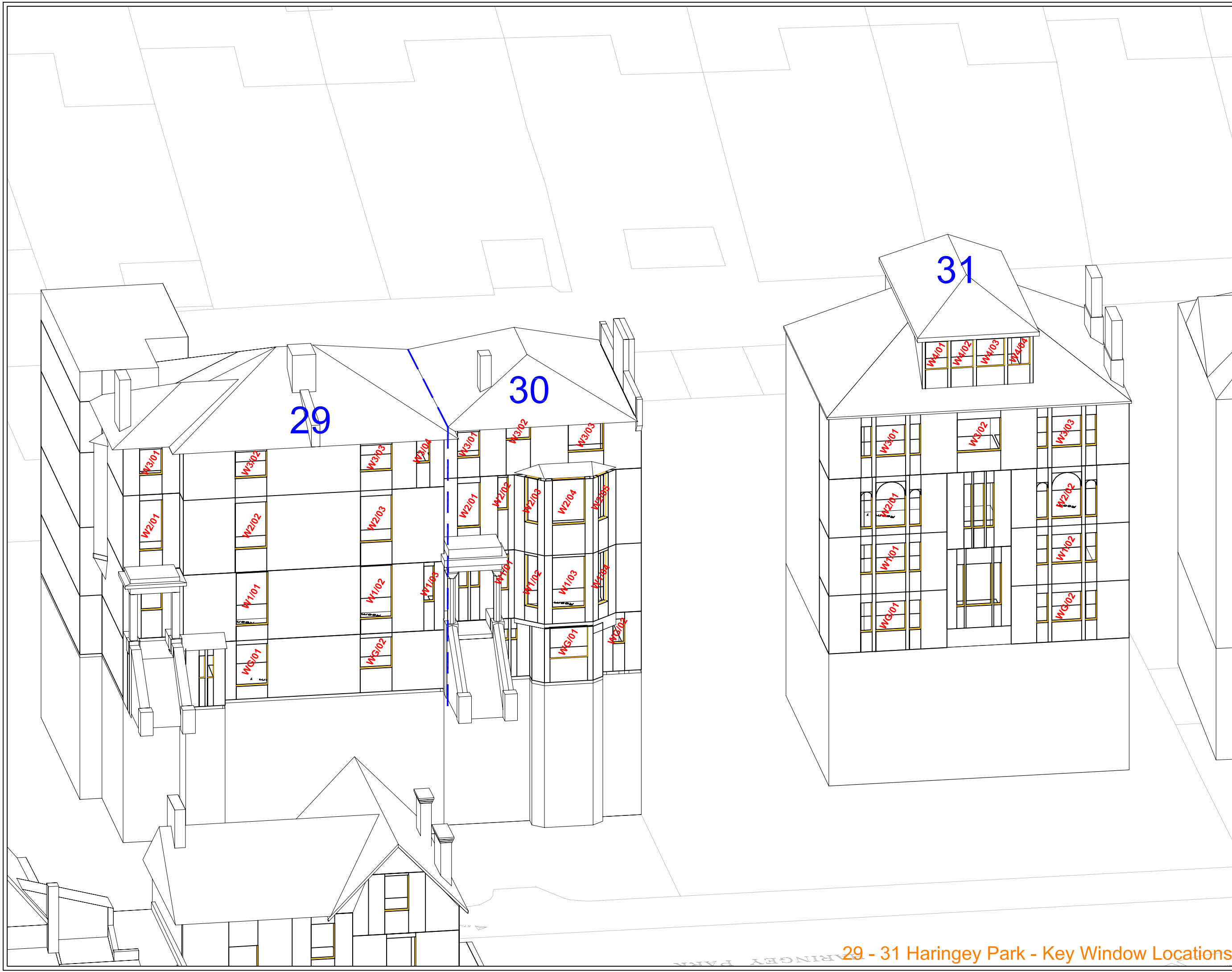
**TITLE:**  
 HORNSEY TOWN HALL  
 LONDON  
 .  
 .  
 .  
**DAYLIGHT / SUNLIGHT ANALYSIS**

**DRAWING:**  
 2 - 10 Hatherley Gardens  
 Daylight / Sunlight Analysis  
 Key Window Locations  
 .  
 .  
 .

|                        |              |
|------------------------|--------------|
| DRAWN: DW              | JOB NO:      |
| SCALE: NTS             | <b>09219</b> |
| DATE: 11/01/2010       |              |
| DWG NO: <b>LOC/801</b> | REV: -       |

**2 - 10 Hatherley Gardens - Key Window Locations**





NO DIMENSIONS TO BE SCALED FROM THIS DRAWING:

■ Existing  
■ Proposed  
■ Surrounding

W1/08 Window Tested Daylight only  
W1/08 Window Tested Daylight & Sunlight

**SOURCE DATA**

Drawings Used:  
 Existing and surrounding buildings:  
 CADPLAN Surveys:  
 Dwg No's: 4606\_01 Through to 48.

On Centre Surveys:  
 Dwg No's: 18891 A/1 Through to 5.

Ordnance Survey Plan Data.

**NOTES**

Building not accessed to assess internal configuration - room uses assumed.

Site Plan

| REV | Description | Drawn | Ch'kd | Date |
|-----|-------------|-------|-------|------|
|     |             |       |       |      |

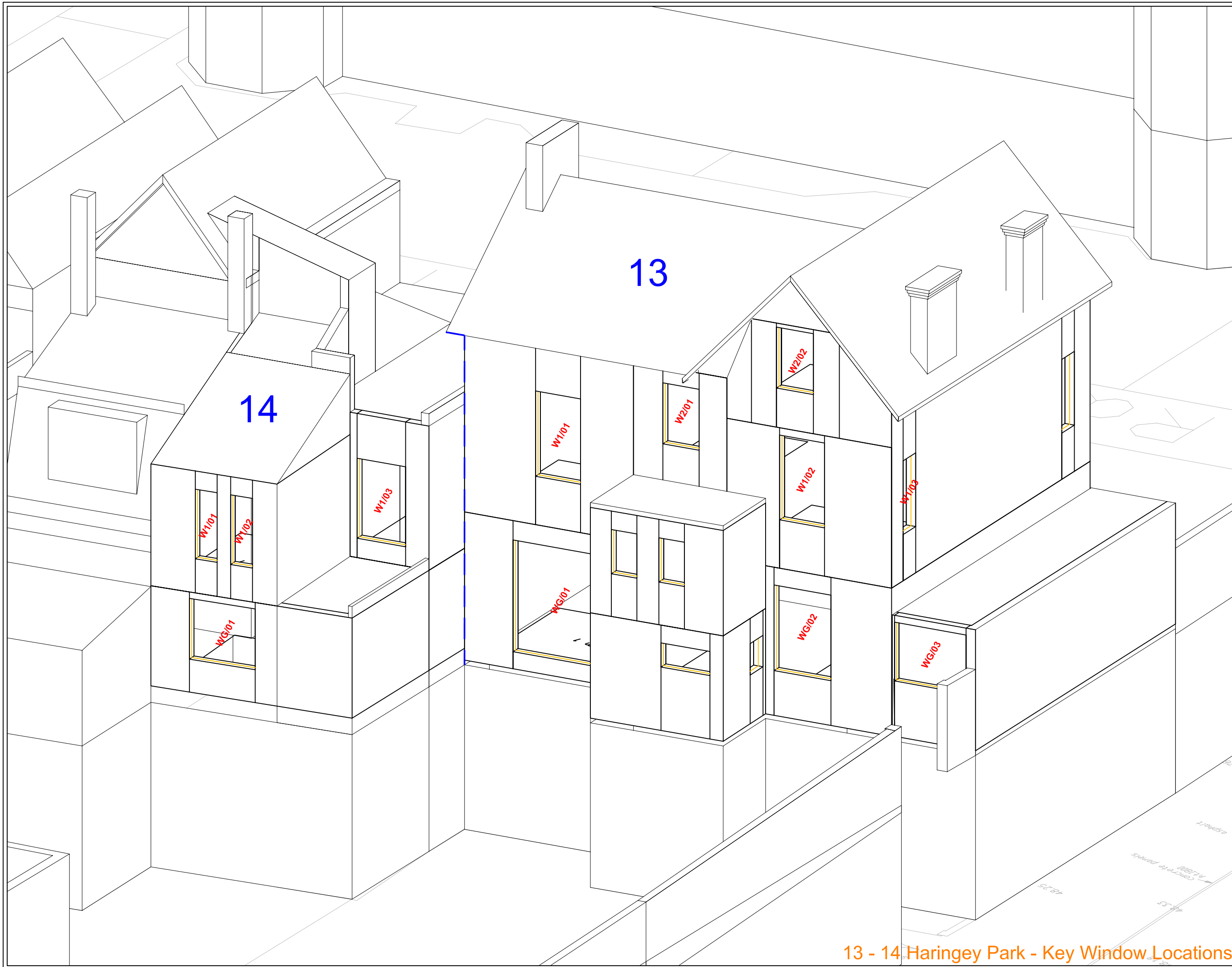
**Delva Patman Associates**  
 2 Henrietta Street London WC2E 8PS  
 Tel: 020 7240 6004 Fax: 020 7240 7658  
 E-mail: info@delvapatman.co.uk  
 Chartered Surveyors & Design Consultants

**TITLE:**  
 HORNSEY TOWN HALL  
 LONDON  
 -  
 -  
 -  
 DAYLIGHT / SUNLIGHT ANALYSIS

**DRAWING:**  
 29 - 31 Haringey Park  
 Daylight / Sunlight Analysis  
 Key Window Locations  
 -  
 -  
 -

|                  |         |
|------------------|---------|
| DRAWN: DW        | JOB NO: |
| SCALE: NTS       | 09219   |
| DATE: 11/01/2010 |         |
| DWG NO: LOC/802  | REV: -  |

29 - 31 Haringey Park - Key Window Locations



NO DIMENSIONS TO BE SCALED FROM THIS DRAWING:

■ Existing  
■ Proposed  
■ Surrounding

W1/08 Window Tested Daylight only  
W1/08 Window Tested Daylight & Sunlight

**SOURCE DATA**

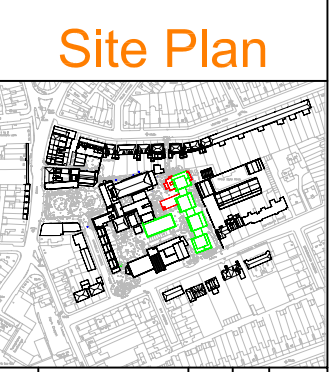
Drawings Used:  
 Existing and surrounding buildings:  
 CADPLAN Surveys:  
 Dwg No's: 4606\_01 Through to 48.

On Centre Surveys:  
 Dwg No's: 18891 A/1 Through to 5.

Ordnance Survey Plan Data.

**NOTES**

Internal configuration based on 1950's New Sanitary Fittings Drawings. Provided by Capita Symonds.



| REV | Description | Drawn | Ch'kd | Date |
|-----|-------------|-------|-------|------|
|     |             |       |       |      |

**Delva Patman Associates**  
 2 Henrietta Street London WC2E 8PS  
 Tel: 020 7240 6004 Fax: 020 7240 7658  
 E-mail: info@delvapatman.co.uk  
 Chartered Surveyors Design Consultants

**TITLE:**  
 HORNSEY TOWN HALL  
 LONDON  
 -  
 DAYLIGHT / SUNLIGHT ANALYSIS

**DRAWING:**  
 13 - 14 Haringey Park  
 Daylight / Sunlight Analysis  
 Key Window Locations  
 -  
 -  
 -

|                        |              |
|------------------------|--------------|
| DRAWN: DW              | JOB NO:      |
| SCALE: NTS             | <b>09219</b> |
| DATE: 11/01/2010       |              |
| DWG NO: <b>LOC/803</b> | REV: -       |

**13 - 14 Haringey Park - Key Window Locations**